

LILLIPUT®

21.5" 1000 NITS HIGH-BRIGHT

BROADCAST MONITOR

21.5"
1920X1080
Resolution

HDMI 2.0
3G-SDI

1000 NITS
High brightness

HDR
PQ/HLG

LUT
3D LUT
17 User Logs



Broadcast monitor for professional camcorder & video camera
Application for video post production & making movies.

HDR

SUPPORT ST2084 300/1000/10000 / HLG

Making lighter and darker details to be displayed more clearly. Under 1000 nits brightness, it can show the effect of 1+1≥2.



1000 NITS

FOR DAYTIME WITH STRONG SUNLIGHT

The high brightness screen makes it possible to see the image clearly even when it is exposed to sunlight.



BROADCAST



LUT OFF



LUT ON

FILMMAKING



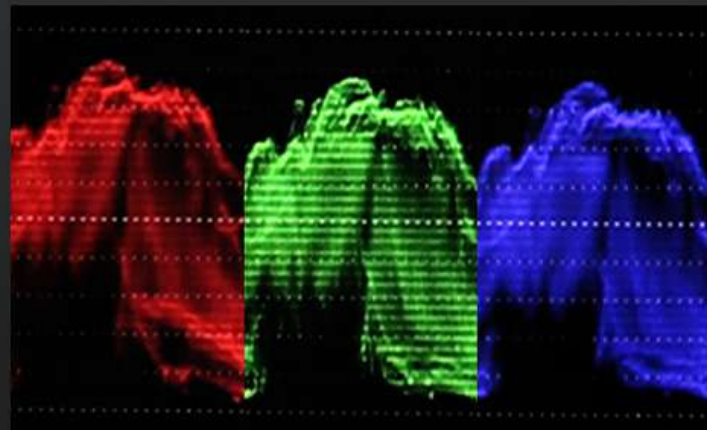
LIVE STREAM

3D LUT

Import LUT tables via USB to dye your scenes with different colors. It can quickly recombine color tone to form different color styles.

Built-in 3D-LUT, featuring 17 default logs and 6 user logs.

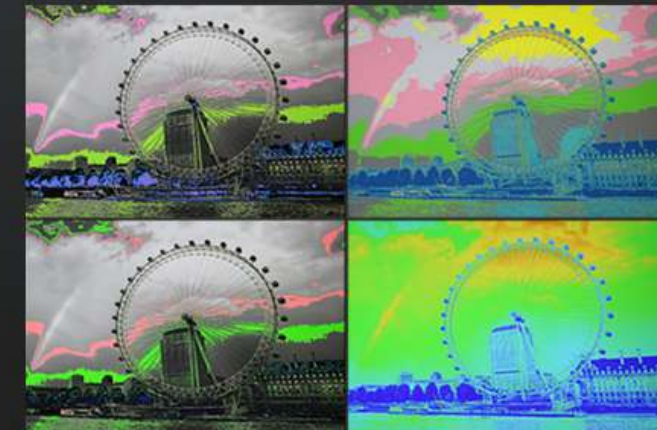
Camera Assist Functions



Full Screen Waveform



Full Screen Vectorscope



False Color



User Markers



Color Temp



Color Space



3D-LUT



HDR



Gamma



UMD



Time code



Vector scope



Waveform



Level meter



Histogram



Exposure



Peaking



False color



Check field



Color bar



Pixel zoom



Pix to pix



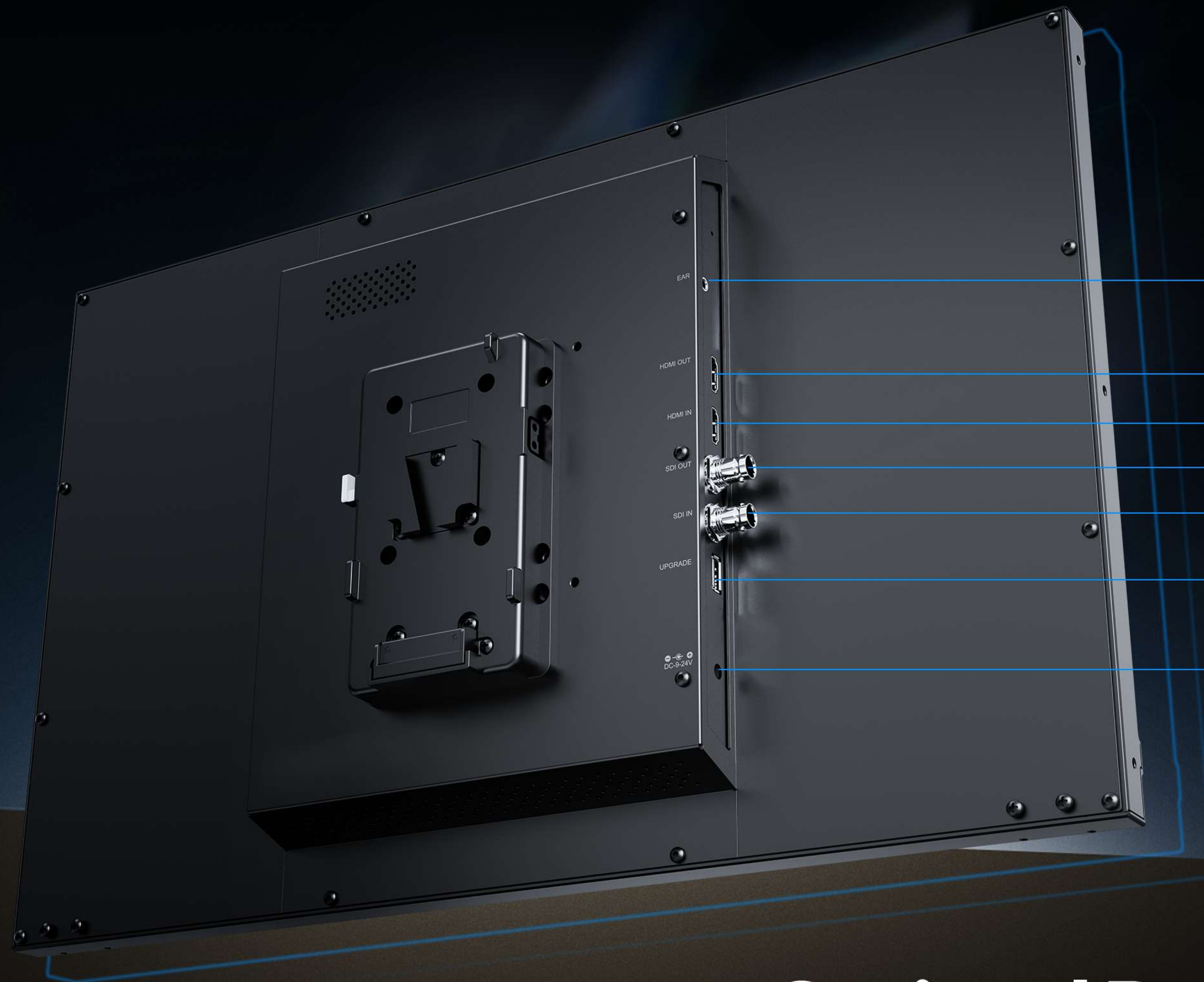
Marker



Freeze



H/V Delay



EARPHONE

HDMI 2.0 OUTPUT

HDMI 2.0 INPUT

3G-SDI OUTPUT

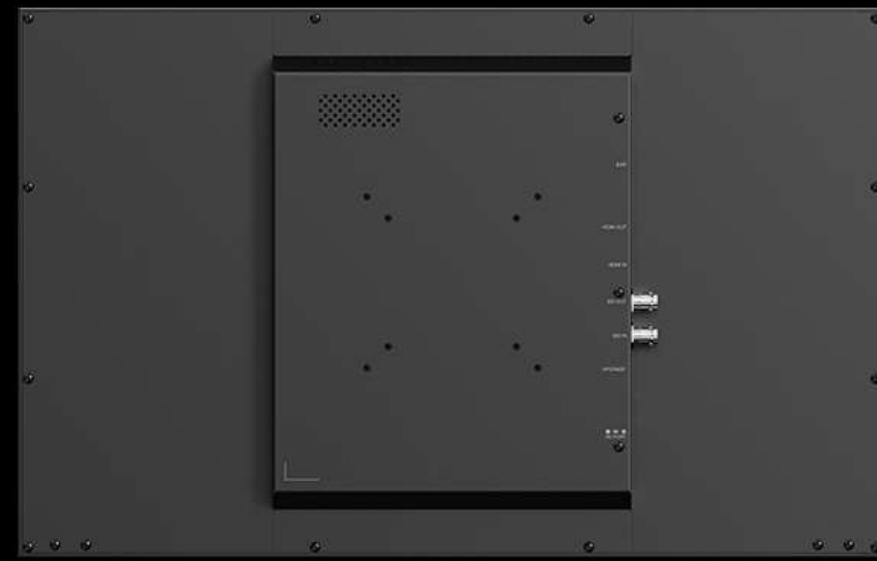
3G-SDI INPUT

USB FOR UPGRADE

DC 9-24V INPUT

Optional Battery Plates

The back of broadcast monitor is equipped with VESA 75mm / 100mm installation options, which is compatible with the installation of most light stands and battery plates. The battery plate can be selected from V-lock battery plate and Anton Bauer battery plate.



Base Bracket

Carrying Case

ACCESSORIES

STANDARD



15V 4A DC Adapter

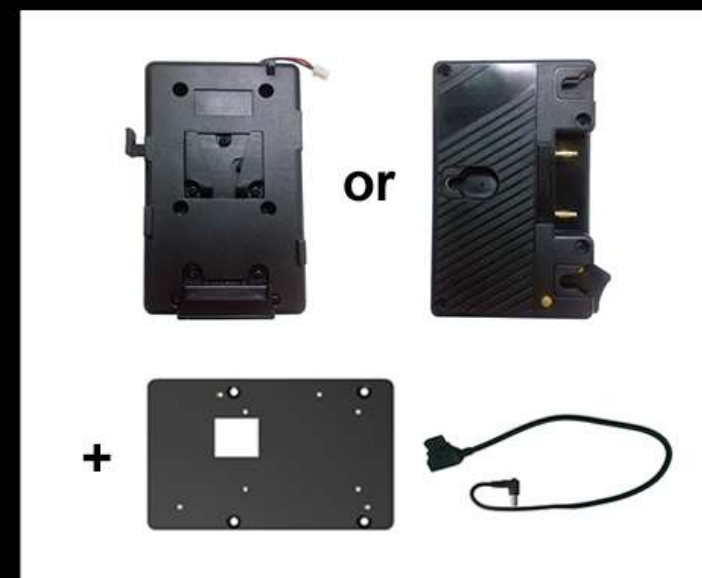


Base Bracket



E-User Manual

OPTIONAL



Battery Plate + D-Tap Cable



Carrying Case + Sunshade



Rack Mount Bracket
(for carrying case)

SPECIFICATIONS

DISPLAY	Panel	21.5"
	Physical Resolution	1920×1080
	Aspect Ratio	16:9
	Brightness	1000cd/m ²
	Contrast	1000:1
	Viewing Angle	178°/ 178°(H/V)
	HDR	ST2084 300/1000/10000/HLG
	Supported Log formats	SLog2 / SLog3 / CLog / NLog / ArriLog / JLog or User...
	Look up table (LUT) support	3D LUT (.cube format)
	Calibration	Calibration to Rec.709 with optional calibration unit
VIDEO INPUT	SDI	1×3G
	HDMI	1×HDMI 2.0
VIDEO LOOP OUTPUT	SDI	1×3G
	HDMI	1×HDMI 2.0
SUPPORTED FORMATS	SDI	1080p 24/25/30/50/60, 1080pSF 24/25/30, 1080i 50/60...
	HDMI	2160p 24/25/30/50/60, 1080p 24/25/30/50/60, 1080i 50/60, 720p 50/60...
Audio In/Out (48kHz PCM Audio)	SDI	2ch 48kHz 24-bit
	HDMI	8ch 24-bit
	Ear Jack	3.5mm
	Built-in Speakers	1
POWER	Input Voltage	DC 9-24V
	Power Consumption	53W (15V)
	Compatible batteries	V-Lock or Anton Bauer Mounts (Optional)
	Input voltage (battery)	14.8V nominal
ENVIRONMENT	Operating Temperature	0°C~50°C
	Storage Temperature	-20°C~60°C
OTHER	Dimension(LWD)(mm)	508×321×47
	Weight	4.7kg

Note: Due to constant effort to improve products and product features, specifications may change without notice.

