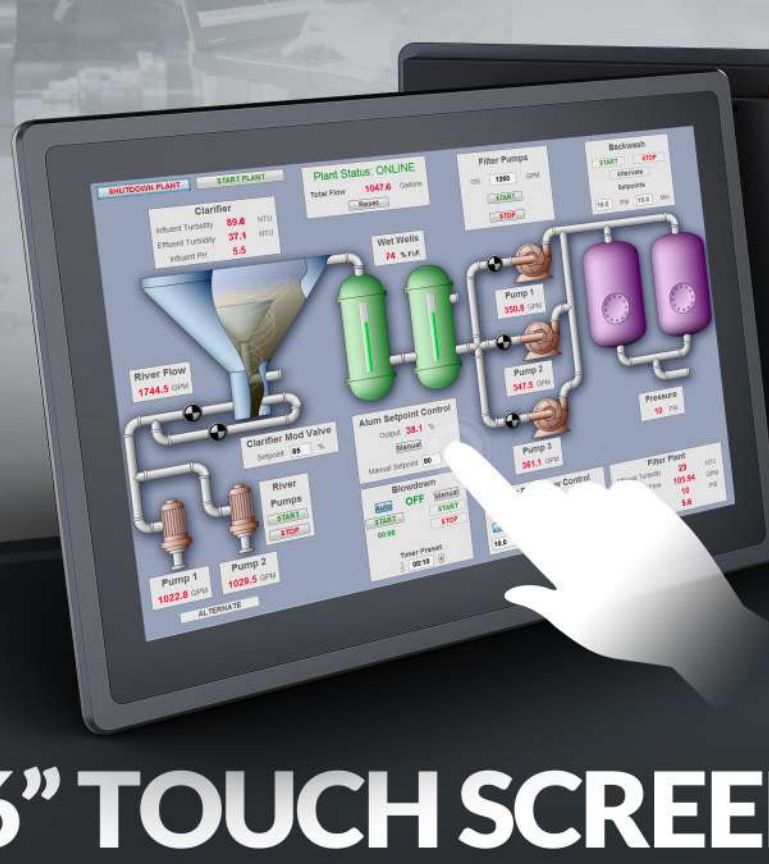


**PC-1560**  
MODEL NO.:



# 15.6" TOUCH SCREEN PANEL PC

Panel PC solutions for wide range of industrial & commercial applications

- FHD 1920\*1080 resolutions
- IP65 Rating
- Metal Housing
- 10-Points Touch
- 1000 nit Brightness
- WIFI/BT/4G
- Windows 10/11
- Linux



## Applications

Rich resource working with powerful Intel CPU processor, which applied in different fields. For instance, Intelligent industrial control system, electric power industry, electronic assembly line, numerical control machine, coal mine acquisition, large warehouse management, manufacturing, retail, medical device, HMI, catering and entertainment, port terminal, shopping mall, etc.



## IP65 Rating Screen Panel

The front panel is designed to carry IP65 degree of protection which offer complete protection against particles, and a good level of protection against water, up to water projected by a nozzle against front panel from any direction.

## Sunlight Viewable

High Brightness  
1000 cd/m<sup>2</sup>



## A+ Industrial Grade Screen

Selection of high-quality industrial-grade screens on the market, which not only has prominent color representation, but also the high brightness of 1000 nit screen panel makes it suitable for outdoor sunlight conditions.

## X86 Architecture



**CPU (Optional)**  
Intel Celeron J4125 / J6412 Processor  
Intel Celeron J4125 2.0 GHz quad-core processor (4M Cache, up to 2.70 GHz)  
Intel Celeron J6412 2.0 GHz quad-core processor (1.5M Cache, up to 2.60 GHz)

**Intel i3 / i5 / i7 - 12 / 13th Processor**  
Intel® Core™ i3-1215U 3.3 GHz processor (10M Cache, up to 4.40 GHz)  
Intel® Core™ i3-1315U 3.3 GHz processor (10M Cache, up to 4.50 GHz)  
Intel® Core™ i5-1235U 3.3 GHz processor (12M Cache, up to 4.40 GHz)  
Intel® Core™ i5-1335U 3.4 GHz processor (12M Cache, up to 4.60 GHz)  
Intel® Core™ i7-1255U 3.5 GHz processor (12M Cache, up to 4.70 GHz)  
Intel® Core™ i7-1355U 3.7 GHz processor (12M Cache, up to 5.00 GHz)

**System support**  
Windows 10 / 11, Linux for optional

**RAM / ROM**  
RAM: 4GB; Storage: 120GB

**Touch**  
15.6" 10-points touch screen with friendly user experience

**Cellular Network**  
LTE, DC-HSPA+, WCDMA, GSM (Intel 12/13th)

**Bluetooth**  
Bluetooth 5.0 2402MHz~2480MHz

**Wi-Fi**  
802.11b/g/n/ac, 2.4GHz & 5GHz

**Mounting**  
Embedded wall mounting, 100mm / 75mm VESA mounting

**Interface**  
COM, LAN, USB, HDMI, VGA...

## Metal Housing

Tightly stitched sheet metal process with open design that can be split and replaced.



Intel 12/13th Processors

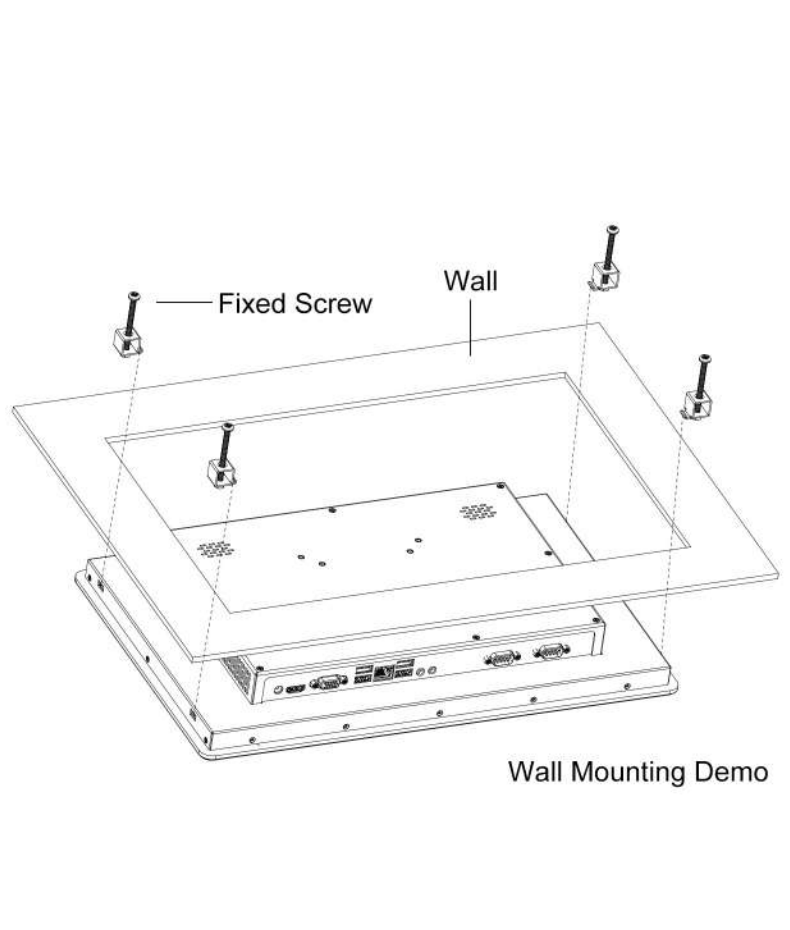
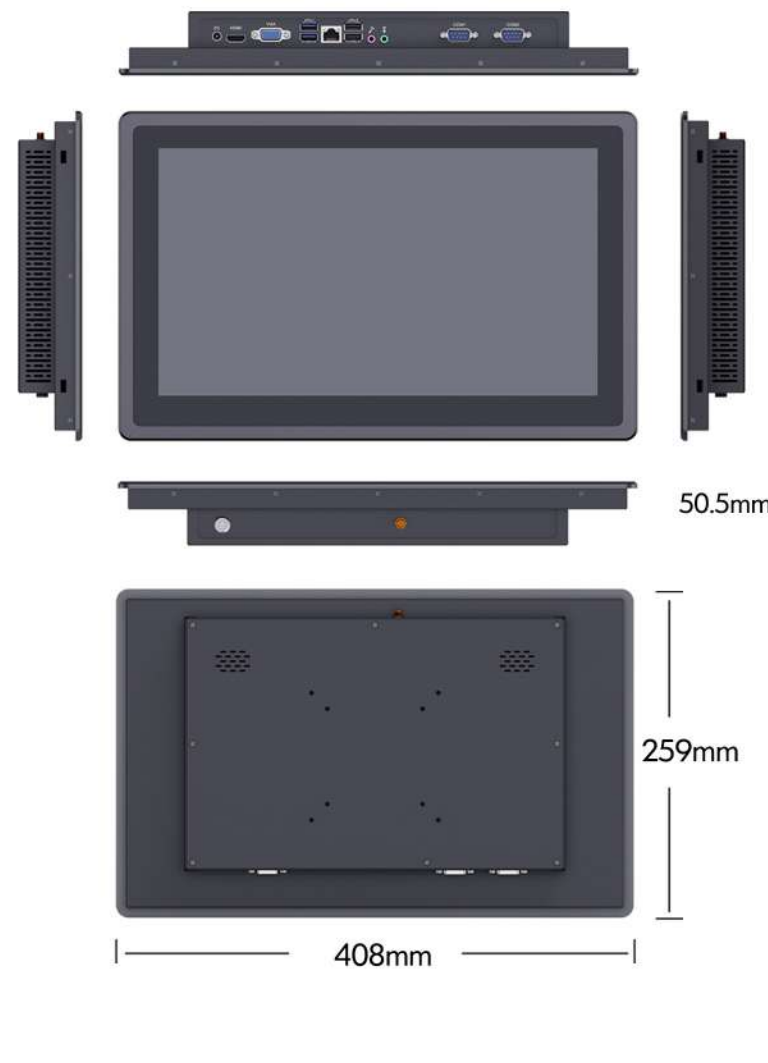


Intel Celeron J4125/J6412 Processors

- COM x2
- LAN x1
- USB x4
- VGA x1
- HDMI x1
- SIM x1
- COM x2
- LAN x1
- USB x4
- VGA x1
- HDMI x1

## Rich Interfaces

In addition to the interfaces shown, the engineers have creatively reserved a number of expansion ports on the mainboard that can be uniquely customized for different requests. The readily replaceable sheet metal also provides a great deal of ease in modifying the interfaces.



## SPECIFICATION

	PC1560-J4125	PC1560-J6412	PC1560-i3/i5/i7
<b>CPU</b>	Intel Celeron J4125 2.0 GHz Quad-core Processor (4M Cache, up to 2.70 GHz)	Intel Celeron J6412 2.0 GHz Quad-core Processor (1.5M Cache, up to 2.60 GHz)	i3-1215U 3.3 GHz Processor (10M Cache, up to 4.40 GHz) i3-1315U 3.3 GHz Processor (10M Cache, up to 4.50 GHz) i5-1235U 3.3 GHz Processor (12M Cache, up to 4.40 GHz) i5-1335U 3.4 GHz Processor (12M Cache, up to 4.60 GHz) i7-1255U 3.5 GHz Processor (12M Cache, up to 4.70 GHz) i7-1355U 3.7 GHz Processor (12M Cache, up to 5.00 GHz)
<b>GPU</b>		Intel® UHD Graphics	
<b>OS</b>		Windows 10/11 (unactivated) / Linux (optional)	
<b>RAM</b>	4GB DDR4, up to 8GB	4GB DDR4, up to 16GB	4GB NB-DDR4, up to 64GB
<b>Storage</b>	120GB mSATA (up to 1TB)	120GB mSATA (up to 1TB)	120GB M.2-SATA (up to 1TB)
<b>LCD</b>		15.6" 1920 * 1080, 1000cd/m <sup>2</sup>	
<b>Touch Screen</b>		10-point PCAP, support touch with gloves and water	
<b>Bluetooth</b>		BT5.0, 2402MHz~2480MHz	
<b>WLAN</b>		802.11b/g/n/ac, 2.4GHz & 5GHz	
<b>Sound</b>		Microphone and audio output	
<b>Interfaces</b>		2 * 8Ω 5W Speaker 1 * HDMI output (up to 4K 30Hz) 1 * VGA output (up to 1080P 60Hz) 2 * USB 2.0 Host, 2 * USB 3.0 Host	2 * USB 2.0 Host, 2 * USB 3.2 Host
<b>Card Slot</b>	/	1 * LAN, 1000M COM1: RS232; COM2: RS232/RS422/RS485 1 * Audio output, 1 * Microphone	1 * SIM Slot
<b>Power Consumption</b>	≤ 42W	≤ 42W	≤ 65W
<b>Physical Dimension</b>		408 x 259 x 50.5 mm	
<b>Weight</b>		4.0kg	
<b>Environment</b>		Dust-proof: IP6x (front panel) Water-proof: IPx5 (front panel) Operating Temperature: -10°C ~ 60°C (14°F ~ 140°F) Storage Temperature: -20°C ~ 70°C (-4°F ~ 158°F)	

## ACCESSORIES

