

10.1" 1000 NITS INDUSTRIAL PANEL PC

CAPACITIVE TOUCH DISPLAY



1000 Nits High-Bright



1280x800



Auto Dimming



PoE/PoE+



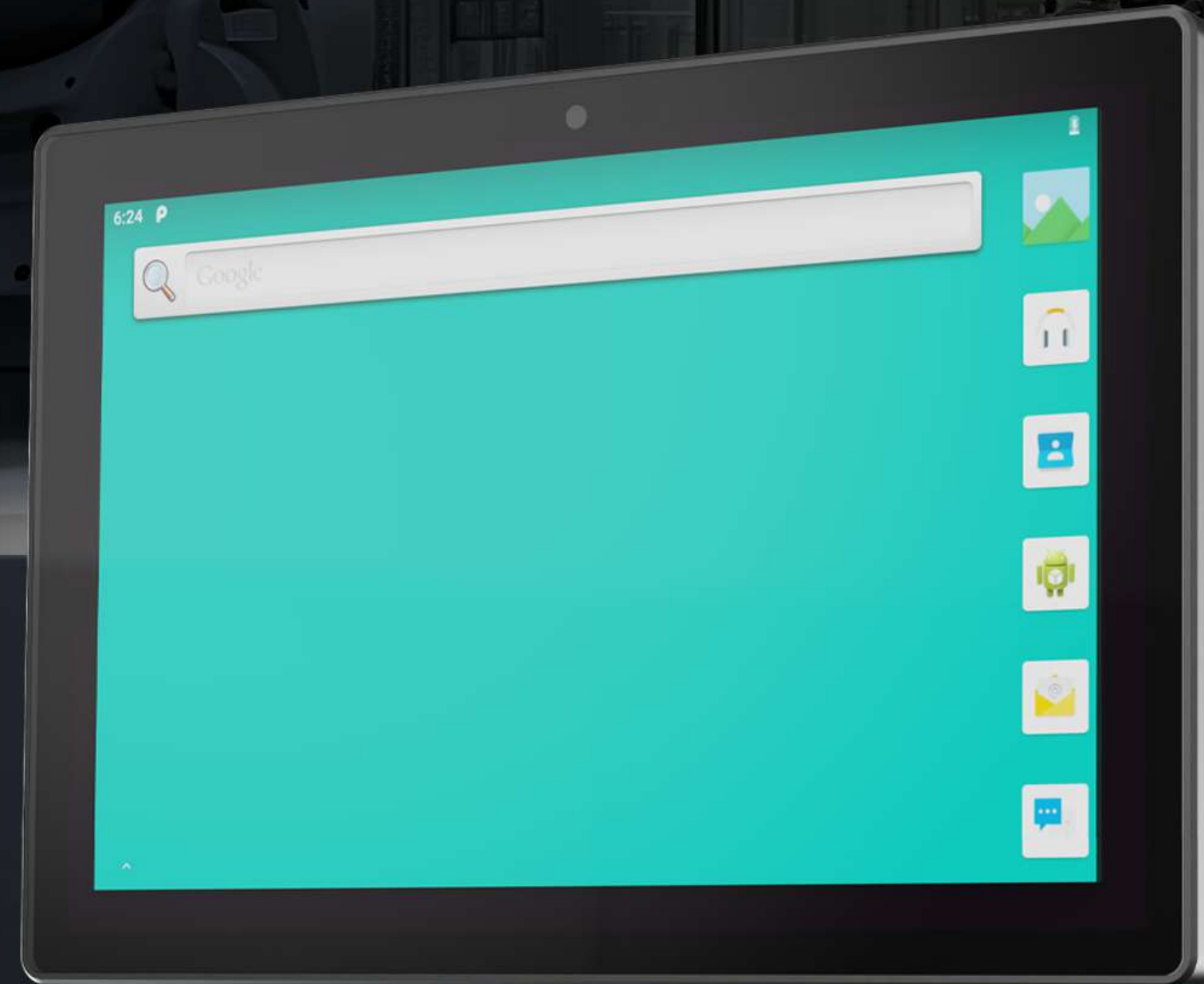
ISO 7637-2



Full Lamination



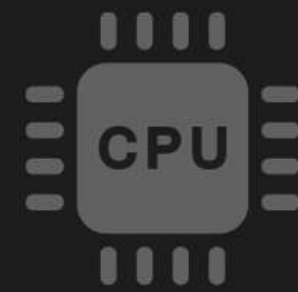
IP65 Rating



Model No.: **PC-1011**



INTEGRATED CHIPSET



CPU

Qualcomm Cortex®-A53 64-bit 1.8GHz
Octa-core processor



Cellular Network

LTE, UMTS, GSM



Wi-Fi

802.11a/b/g/n/ac, 2.4 GHz & 5 GHz



GNSS

GPS / GLONASS



Bluetooth

2402MHz~2480MHz



PoE/PoE+

PoE: IEEE802.3 af,
PoE+: IEEE802.3 at,
Power supply by Ethernet port



Memory

RAM: 2GB LPDDR3 Or RAM: 4GB LPDDR3
ROM: 16GB eMMC ROM: 64GB eMMC

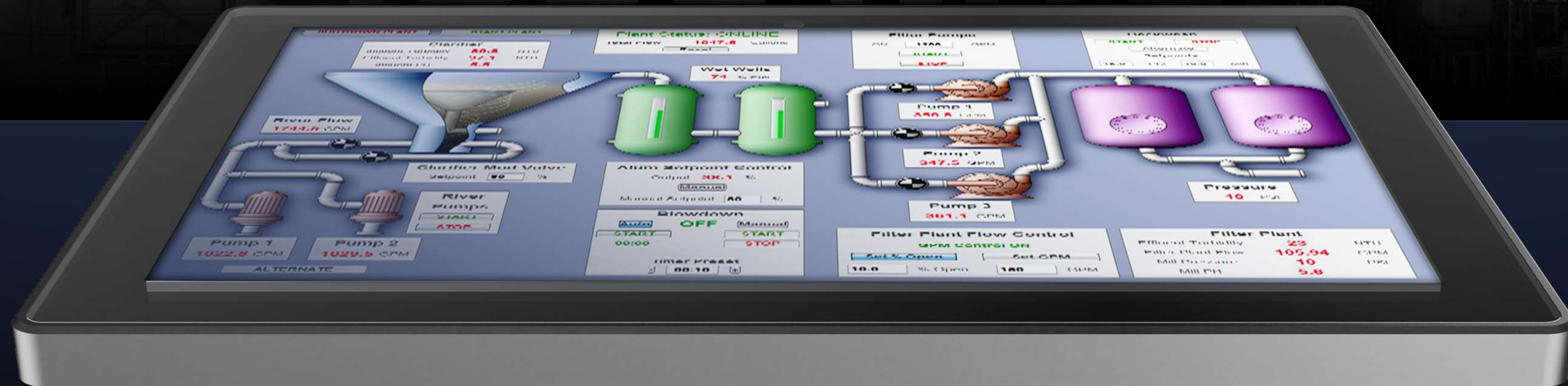


GPU

Adreno 506

*Tips: Cellular Network, GNSS and PoE functions are optional items.

1000 NITS



Industrial panel PC features with 1000 nits high brightness for outdoor sunlight readable.



10.1" HD

10.1" Industrial-grade touch screen panel with 1280×800 resolution.



1000 NITS

The screen can still be seen clearly in outdoor use without hindering operation.



7H HARDNESS

The hardness of the screen is greater than 7H and it has passed IK06 test.

WI-FI
For External Wi-Fi antenna

LTE-M
For External 4G antenna

GPS
For External GPS antenna

POWER SWITCH
Power On/Off

VESA 75MM
For VESA 75mm Bracket.

POWER SUPPLY
3 Pin Terminal Block, DC 9-36V

VCC
ACC
GND

GPIO/RS232 SIM CARD SD TYPE-C USB2 USB1 LAN HDMI

EARPHONE
Stereo Audio Output (3.5mm)

GPIO/RS232
GPIO×4, RS232×3

SIM CARD
SIM Card Slot

SD CARD
Micro SD Card Slot

USB-C
USB Type-C Device

USB 2
USB Type-A Host

USB 1
USB Type-A Host

LAN
POE/POE+ Optional

HDMI
HDMI Output



CABLE FIXING POSITION
Use A Snap Ring To Tie The Cable To This Structure



optional,

IP65 / NEMA 4

FOR FRONT PANEL

Front panel of the monitor is designed to carry IP65 rating and NEMA 4 degree of protection which offer complete protection against particles, and a good level of protection against water projected by nozzle against monitor from any direction.

Embedded Installation

The PC is paired with flexible components to build reliable installation method, suitable for most embedded demand environments.



Applications & Solutions

High performance leads to excellent compatibility with diverse applications, for instance, self service machine, industrial control, dashboard interface, smart locker and so on



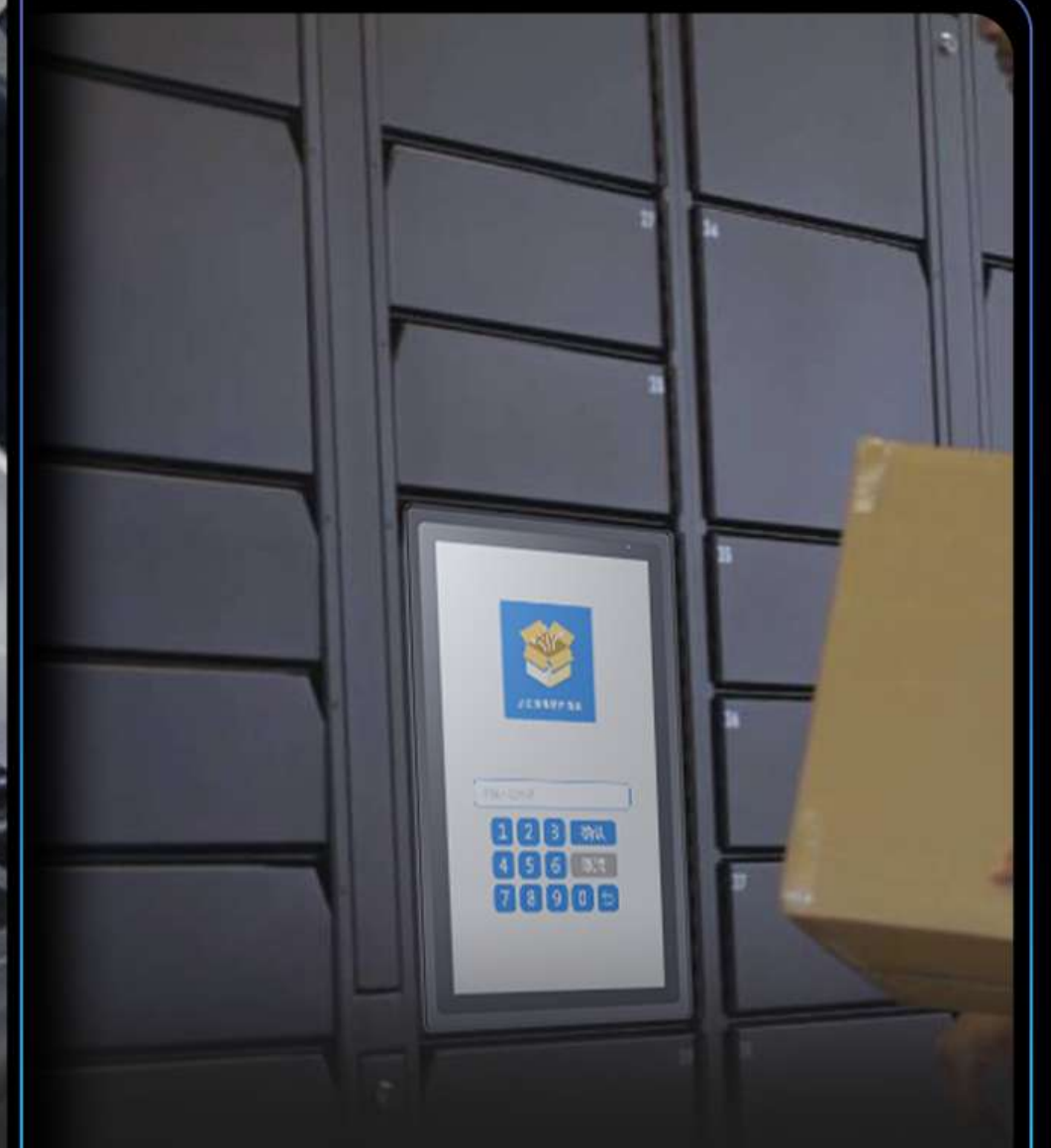
Self Service Machine



Industrial Control



Dashboard Interface



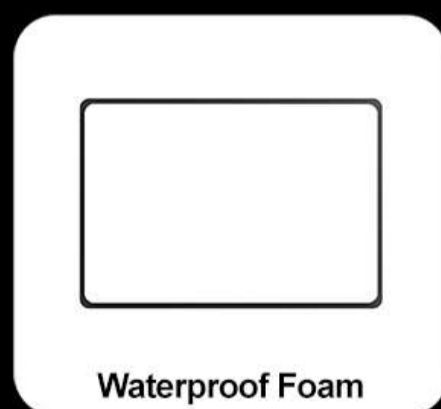
Smart Locker

Specifications • Accessories

SYSTEM	CPU	Qualcomm Cortex®-A53 64-bit Octa-core 1.8GHz processor
	OS	Android 9.0
	RAM + ROM	2GB LPDDR3 + 16GB eMMC, 4GB + 64GB are optional
	GPU	Adreno 506
PANEL	Sensors	Light Sensor
	LCD	10.1" IPS, 1280×800, 1000 nit, 170°/170° viewing angle
	Touch Screen	Multi-point PCAP with G+G technology
	Hardness / Collision	Hardness ≥7H (ASTM D3363), Collision ≥IK06 (IEC6262/EN62262)
INTERFACE	Transmittance	≥86%
	LAN	100M×1 (Optional PoE/PoE+: IEEE802.3 af/at)
	GPIO	×4 (Input×2, output×2)
	COM	RS232×3
	HDMI	×1 Output
	SIM	×1
	Micro SD Card	×1, support up to 1TB
WIRELESS	USB	USB host×2, USB Type-C OTG×1
	Earphone Jack	3.5mm
	Wi-Fi	802.11a/b/g/n/ac, 2.4GHZ/5GHZ
	Bluetooth	2402MHz~2480MHz
	Cellular Network	Optional 3G/4G (LTE, UMTS, GSM)
BUILT-IN	GNSS	Optional (GPS, GLONASS)
	Front Camera	Optional, 5.0MP
POWER	Speaker	×1
	Power Supply	DC 9~36V (ISO 7636-2 compliant)
	Power Consumption	≤12W
OTHER	Dimension	255mm×172mm×32mm
	Weight	1.3kg
	Protection Rating	Front IP65 (IEC60529), Front NEMA 4
	Vibration	1.5Grms, 5~500Hz, 1 hr/axis (IEC 60068-2-64)
	Shock	10G, half-sine wave, last 11ms (IEC 60068-2-27)
	Environment	Operating Temp: -10°C~60°C (14°F~140°F) Storage Temp: -20°C~65°C (-4°F~149°F)



Standard Accessories



Optional Accessories

